

# COMPRE SSION

OXI<sup>+</sup>JET

PROTECTION FOR PERFORMANCE

mico®



## THE FIRST CERTIFIED SOCK WEAR

The OXI-JET® Compression line of socks by Mico Sport has been designed to favor intravenous and lymphatic circulation when practicing sports.

Now the **Italian College of Phlebology** [CIF] has certified that the OXI-JET® Compression sock is the first to meet the required standards for **proper compression**. To obtain certification, Mico Sport had to submit the sock to multiple and severe tests specified in the guidelines of the CIF:

- 1 instrumental test in accordance with the standards on the correct compression ratio from ankle to calf performed in an external authorized lab
- 2 measurement of dynamic compression tested on humans
- 3 OEKO-TEX® Standard 100 certification for all yarn used

**Mico Sport: technology and research for the best performance.**

APPROVED BY THE ITALIAN COLLEGE OF PHLEBOLOGY.





## OPTIMAL COMPRESSION: IDEAL CIRCULATION

The result of these tests is a sock that applies the **right compression** on the muscle, without being too tight, to support natural muscle movement without limitations: a preventive sock with selective compression.

All of this is achieved thanks to **hi-tech machinery** that allow management of the elastic module, radial and longitudinal, which is controlled during the entire manufacturing process, ensuring balanced pressure of the yarn employed in every point of the ankle down to the calf, with no pressure on the upper part.

**1. ERGO-TOES:** NEW CONCEPT FOR TOE-TIPS CREATED TO PERFECTLY FIT THE FOOT WITHOUT LEAVING SPACE BETWEEN TOES; STARTING FROM THE BIG TOE, MODELLING ALL THE OTHERS, OUTLINING PRECISELY THE FORM OF LEFT AND RIGHT

**2. TOES CAN MOVE FREELY** THANKS TO THE ABSENCE OF COMPRESSION, ALLOWING MAXIMUM SPRINT DURING THE RUN

**3. FLAT STITCHING ON THE OUTSIDE** FOR GREATEST COMFORT AND ZERO FRICTION

**4. STRENGTHENED ARCH** GIVES MAXIMUM DIRECTIONAL SUPPORT, STIMULATES THE CIRCULATION AND RETURN OF BLOOD TO THE HEART

**5. SPECIAL BAND TO PROTECT** ACHILLE'S TENDON: MODELLED TO SHAPE, WITH THE EFFECT OF A MICRO-MASSAGE

**6. INTERNALLY ELASTICISED MESH-PATTERNED CUFF:** LIGHTER, PREVENTS THE LACED-UP FEELING



PROTECTION FOR **PERFORMANCE**

# OXI<sup>+</sup>JET

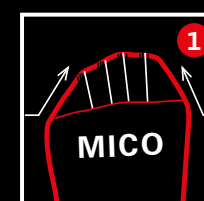
## COMPRESSION

**IMPROVES**

+ CIRCULATION  
+ OXYGEN  
+ ENERGY

**REDUCES**

- FATIGUE  
- PAIN  
- STRESS



INSTEP PLUS

# mico<sup>®</sup>



## THE CERTIFICATION PROCESS

### 1 INSTRUMENTAL TEST

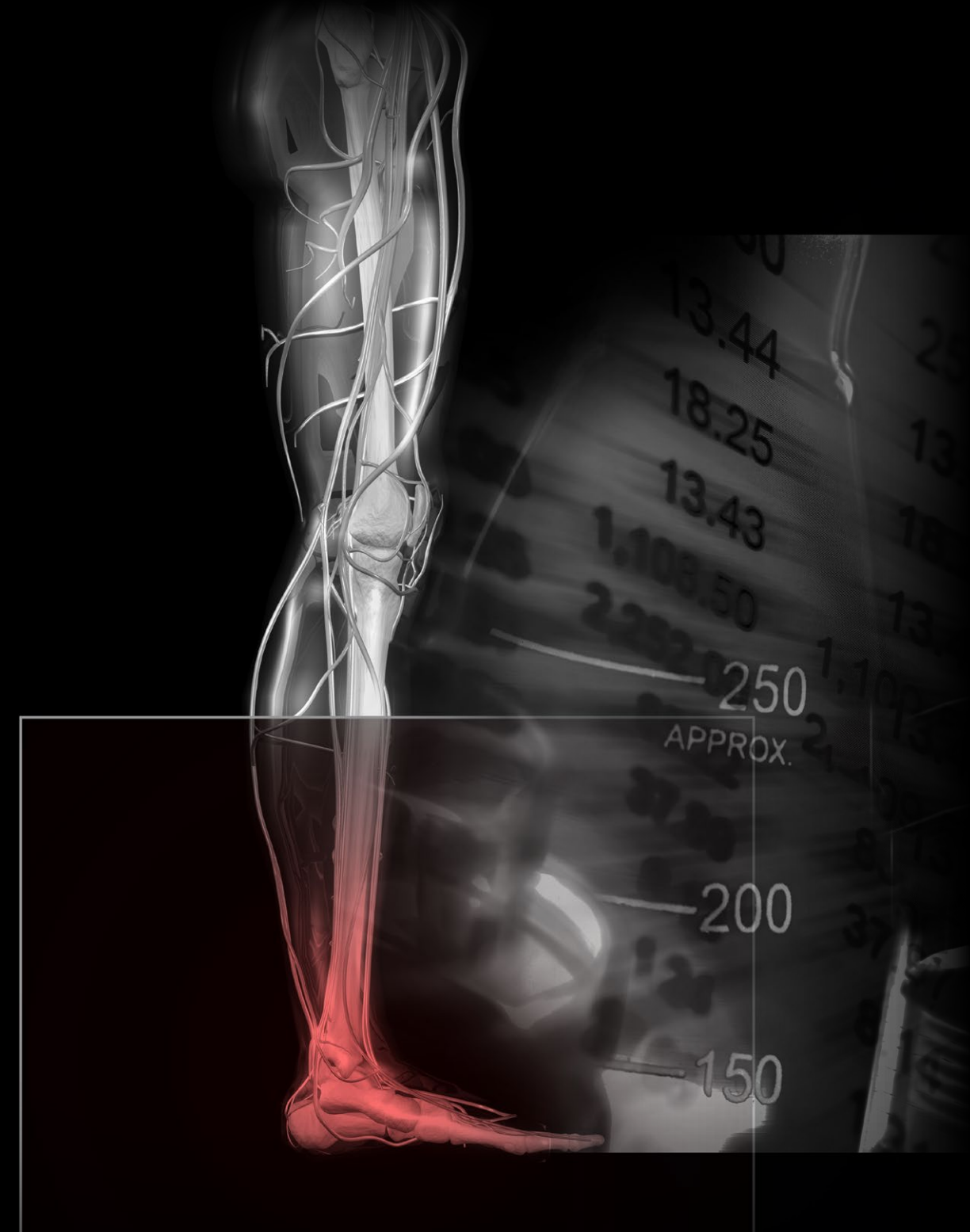
Mico Sport has subjected to sock to test method BS 6612: 1985 at **CENTRO SERVIZI CALZA** in Castel Goffredo [MN, Italy].

After several tests performed on different sizes, the compression ratio measured was in line with CIF guidelines, with **a higher value around the ankle than the calf** [ratio 100:70].



# OXI<sup>+</sup>JET

COMPRESSION







## 2 DYNAMIC COMPRESSION TEST ON HUMANS

For the first time, Mico Sport conducted specific tests on humans, in collaboration with Dr. Bergamo of **MICROLAB ELETTRONICA** - Computerized Cardiovascular Diagnostics.

The tests were performed on a sample of 3 individuals by size, in 3 different positions, measuring pressure variation on the veins:

- lying down [Clino]
- standing up [Orto]
- on toe-tips [SI dinam]

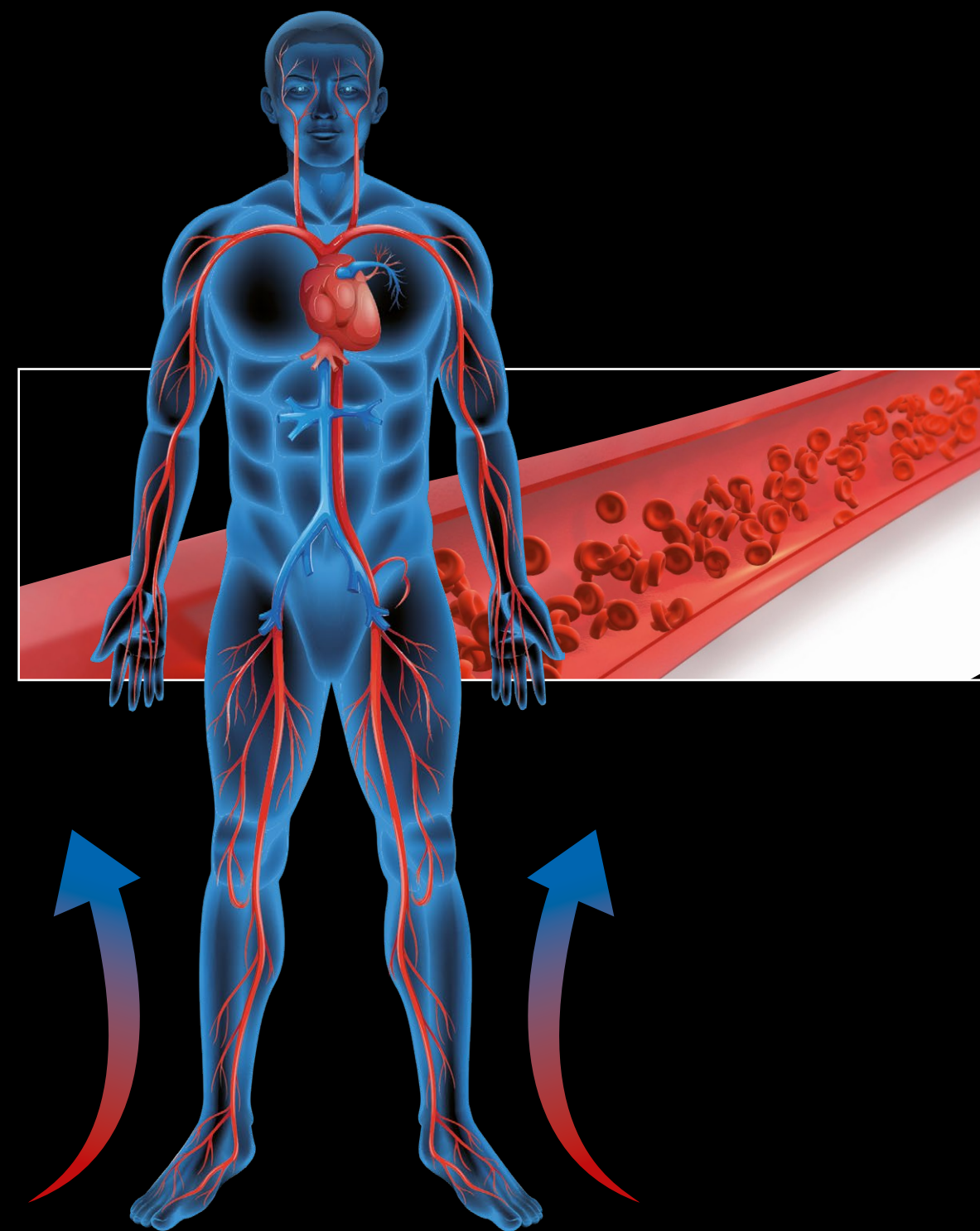
The tests showed that thanks to the use of our socks, with the right compression the pressure is adjusted, thus favoring blood reflux to the heart.

MicroLab  
Elettronica  
Diagnostica Cardiovascolare Computerizzata



# OXI<sup>+</sup>JET

COMPRESSION



# SIZE M

Test subj. 4BB Size 38	Sock M	B1= 23cm	C= 35 cm							
	test 1	test2	test3	test1'	test2'	test3'	test1''	test2''	test3''	average
ClinoB1	16	16	15	14	15	13	12	14	14	14,33
OrtoB1	16	16	16	15	15	15	14	14	14	15,00
SI B1										0,67
SI dinam B1	2	2	2	2	2	2	2	2	2	2,00
Clino C	17	15	15	18	18	17	17	17	15	16,56
Orto C	16	14	14	15	16	16	15	14	14	14,89
SI C										N/A
SI dinam C	2	1	1	1	2	3	3	3	3	2,11

# SIZE L

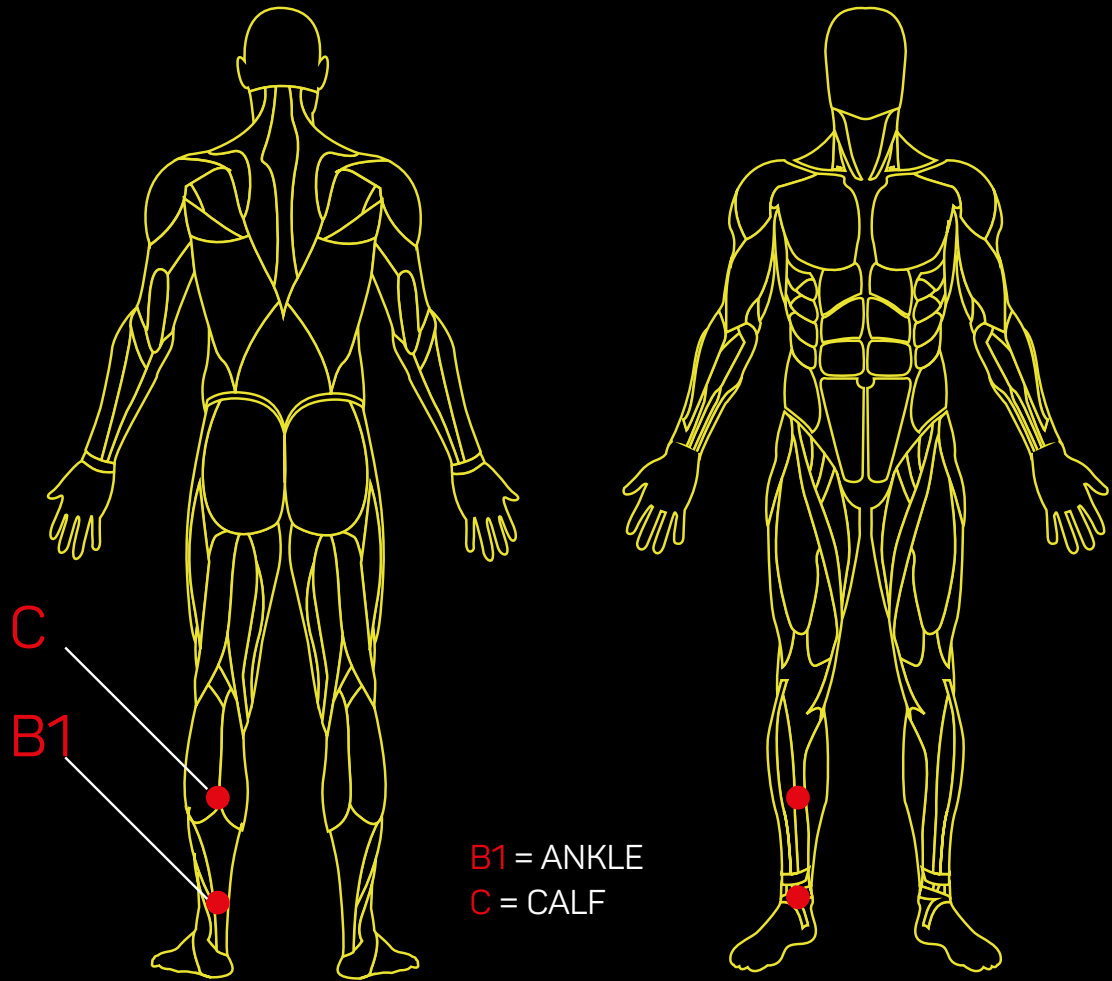
Test subj.1 BG Size 42	SockL	B1= 25cm	C=38 cm							
	test 1	test2	test3	test1'	test2'	test3'	test1''	test2''	test3''	average
ClinoB1	8	8	8	9	8	9	8	8	8	8,22
OrtoB1	13	12	13	13	12	13	12	13	13	12,67
SI B1										4,44
SI dinam B1	6	6	5	5	6	6	6	5	5	5,56
Clino C	7	7	7	8	8	8	9	8	8	7,78
Orto C	9	10	9	10	11	10	11	11	10	10,11
SI C										2,33
SI dinam C	2	2	1	1	2	1	2	2	2	1,67

# SIZE XL

Test subj.7 CO Size 45	SockXL	B1= 28cm	C=39,5 cm							
	test 1	test2	test3	test1'	test2'	test3'	test1''	test2''	test3''	average
ClinoB1	12	11	8	10	8	8	9	8	8	9,11
OrtoB1	12	11	11	12	11	11	11	11	10	11,11
SI B1										2,00
SI dinam B1	5	4	5	4	5	5	4	4	4	4,44
Clino C	12	7	7	8	8	8	9	7	7	8,11
Orto C	12	10	11	11	10	11	12	11	10	10,89
SI C										2,78
SI dinam C	5	5	5	4	4	5	4	3	4	4,33

\* INDICATIVE TABLES TAKEN FROM TESTS PERFORMED

# OXI<sup>+</sup>JET COMPRESSION



Final result	Subj. BG	Subj. BN	Subj. BP	average
ClinoB1	8,22	8,11	9,89	8,74
OrtoB1	12,67	14,22	10,44	12,44
SI B1	4,44	6,11	0,56	3,70
SI dinam B1	5,56	4,67	1,67	3,96
Clino C	7,78	6,44	11,44	8,56
Orto C	10,11	12,11	17,56	13,26
SI C	2,33	5,67	6,11	4,70
SI dinam C	1,67	3,33	5,56	3,52

CLINO

LYING DOWN

ORTO

STANDING UP

SI DINAM

ON TIP-TOES







OXI<sup>+</sup>JET  
COMPRESSION

### 3 OEKO-TEX® CERTIFIED YARN AND WEAVING

All yarn used is certified OEKO-TEX®.  
OEKO-TEX® offers a uniform and scientifically tested standard to measure the human-ecological safety of textile products.



## COLLABORATION WITH LYCRA®

The core of OXI-JET® Compression socks in LYCRA® fiber guarantees consistent elasticity and compression even after several washing cycles.



LYCRA® fibre is a key ingredient in specialised sports socks where it provides added fit and comfort. LYCRA® SPORT socks is the hallmark brand for high-performance socks collections, offering outstanding benefits helping you perform at your best. LYCRA® SPORT socks are engineered for athletes and active people to provide premium foot hugging stretch and recovery power. LYCRA® is trademark of INVISTA.

HI-TECH SOCKS FOR MEN AND WOMEN

OXI<sup>+</sup>JET  
COMPRESSION



CA 01280, MEDIUM  
RUN



CA 01273, LIGHT  
RUN



CA 01270, MEDIUM  
RUN



CA 00159, LIGHT+  
SKI



CA 00160, MEDIUM  
SKI



CA 00158, LIGHT MERINO  
SKI



AC 01120, LIGHT  
MULTISPORT



AC 01124, LIGHT  
RUN



CA 01313, LIGHT  
ACTIVE TRAVEL



CA 03091, MEDIUM  
TREK



CA 03090, MEDIUM  
TREK



# mico®

PROTECTION FOR PERFORMANCE



WWW.MICO.IT - BRESCIA - ITALY - [T] +39.030.2003211

